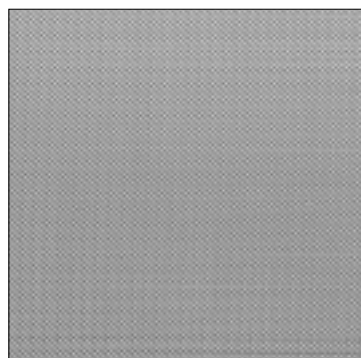
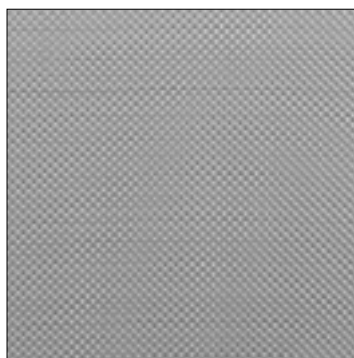


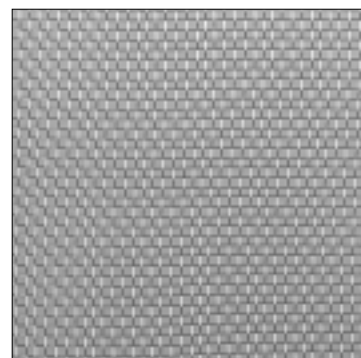
Le maglie sono rappresentate al reale con le usuali tolleranze dovute alla riproduzione fotografica.



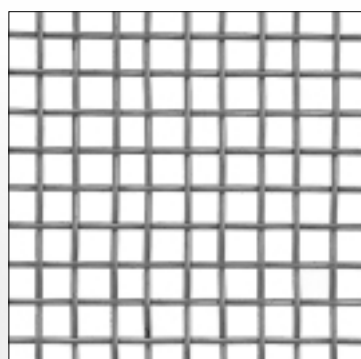
N. 55 Ø 0,14



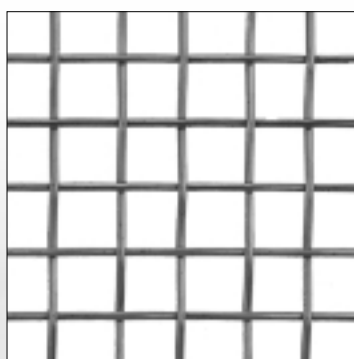
N. 30 Ø 0,20



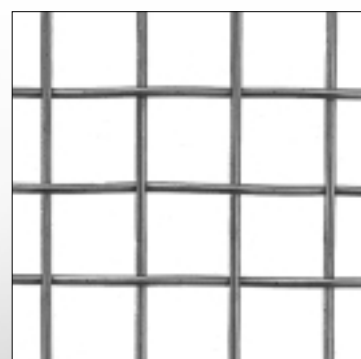
N. 18 Ø 0,24



N. 5 Ø 0,90

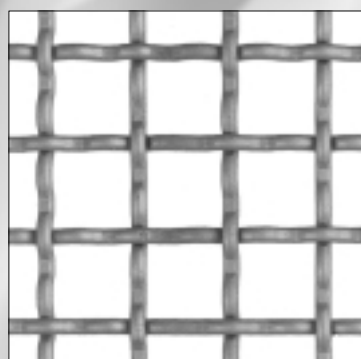


N. 3 Ø 1,0



N. 2,5 Ø 1,5

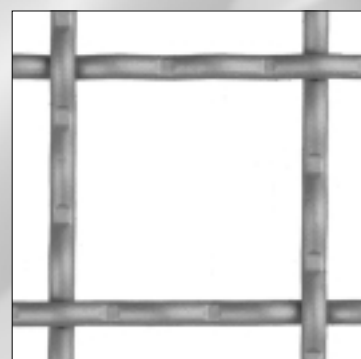
## RETI ONDULATE



10x10 Ø 2,0



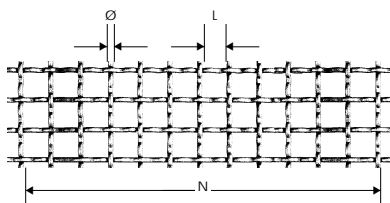
20x20 Ø 3,0



30x30 Ø 3,0

#### LEGENDA

- $\varnothing$  Diametro filo  
 L Luce maglia  
 N Numero maglie in  
 1 pollice francese,  
 pari a mm 27,77



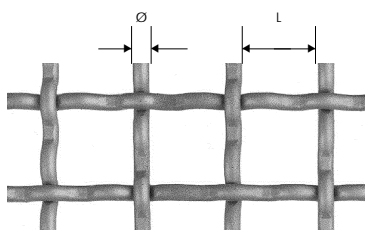
## TELE METALLICHE

Disponibili in rotoli  
h 1000 mm

N. maglie per poll. francese	Diametro del filo mm	Luci tra i fili mm	Maglie per cmq	Superficie utile di passaggio %	Peso al mq (ferro inox)
2,5	1,50	9,610	0,81	74,8	2,530
5	0,90	4,660	3,24	70,0	1,840
8	0,60	2,870	8,29	68,2	1,300
12	0,40	1,910	18,66	68,0	0,870
18	0,24	1,300	42	70,8	0,470
20	0,30	0,990	51,9	50,6	1,450
30	0,20	0,720	116	62,0	0,560
40	0,20	0,490	207	49,7	0,740
50	0,20	0,350	324	41,9	0,930
55	0,14	0,360	392	50,6	0,520
60	0,12	0,343	467	54,9	0,400
80	0,10	0,287	829	51,8	0,400
100	0,09	0,188	1296	45,8	0,390
120	0,08	0,151	1866	42,5	0,370
140	0,06	0,138	2540	48,4	0,245
160	0,06	0,114	3318	42,2	0,340
180	0,05	0,104	4199	45,2	0,270
220	0,05	0,076	6273	36,1	0,330

#### LEGENDA

- $\varnothing$  Diametro filo  
 L Luce maglia



## RETI ONDULATE

Disponibili in fogli  
1000 x 2000.  
In rotoli h 1000,  
1200, 1500,  
2000 x 25 mtl cad.

Luce maglia	Ø filo mm								N. di ondulazioni
	1,50	2,00	2,20	2,50	3,00	3,50	4,00	5,00	
Peso in Kg per m <sup>2</sup>									
10 x 10	2,50	4,50	-	-	-	-	-	-	3
15 x 15	-	-	-	4,80	-	-	-	-	3
20 x 20	-	-	-	-	5,50	-	-	-	3
30 x 30	-	-	-	-	4,60	-	-	-	3
40 x 40	-	-	-	-	-	-	5,10	-	3
50 x 50	-	-	-	-	-	-	-	6,50	3

I pesi indicati sono approssimativi e non impegnativi.